



# Planning for green infrastructure and nature-based solutions

**Rieke Hansen**

RWTH Aachen University



# Green infrastructure and nature-based solutions

...are more than just „greenspace“



The smallest park in the world: Mill Ends Park, Portland (R. Hansen)

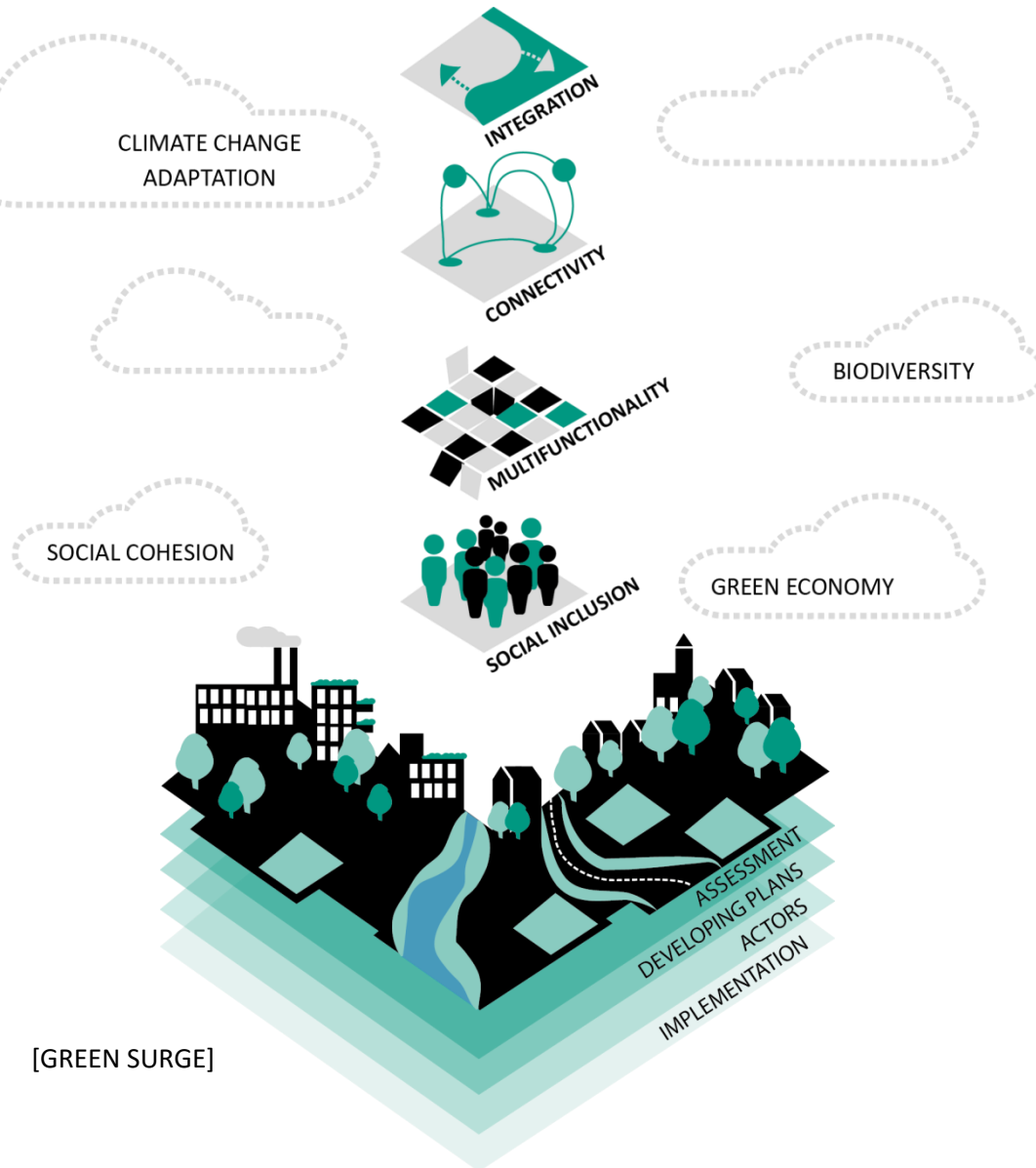


**Green infrastructure (GI) and nature-based solutions (NbS)** are both “intentional” – a result of deliberate planning, design and management.

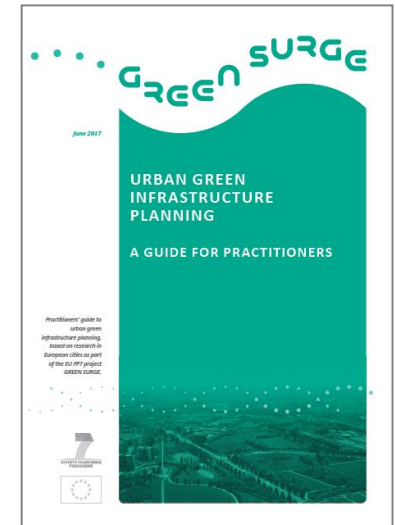
- **GI** (in Europe) aims at multifunctional, connected green space networks.
- **NbS** focus on **solutions** to multiple urban challenges.



# Green infrastructure as an urban planning approach



[GREEN SURGE]





# Nature-based solutions (NbS) are systemic solutions

## EKLIPSE framework

Image removed

Raymond et al. (2017) An Impact Evaluation Framework to Support Planning and Evaluation of Nature-based Solutions Projects. Report prepared by the EKLIPSE Expert Working Group on Nature-based Solutions to Promote Climate Resilience in Urban Areas. Centre for Ecology & Hydrology, Wallingford, United Kingdom



# NbS for challenge „urban regeneration“



## proGInreg project

- Productive Green Infrastructure for postindustrial regeneration
- Testing co-designed and co-created nature-based solutions
- **4 “Front Runner Cities”**: Dortmund, Turin, Zagreb, Ningbo
- **4 “Follower Cities”**: Cascais, Cluj-Napoca, Piraeus, Zenica



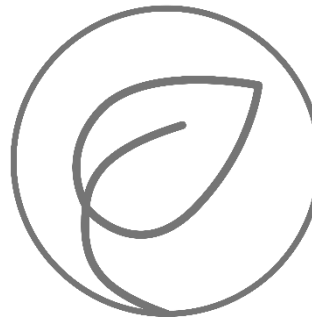


# NbS Benefit Assessment

## Socio-cultural inclusiveness



## Ecological and environmental restoration



## Increased human health and well-being



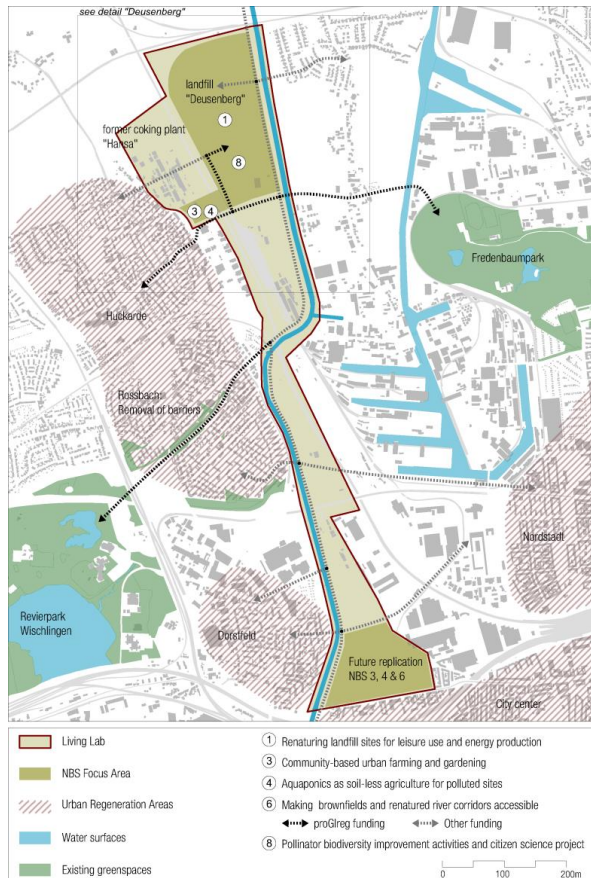
## Economic and labour market benefits



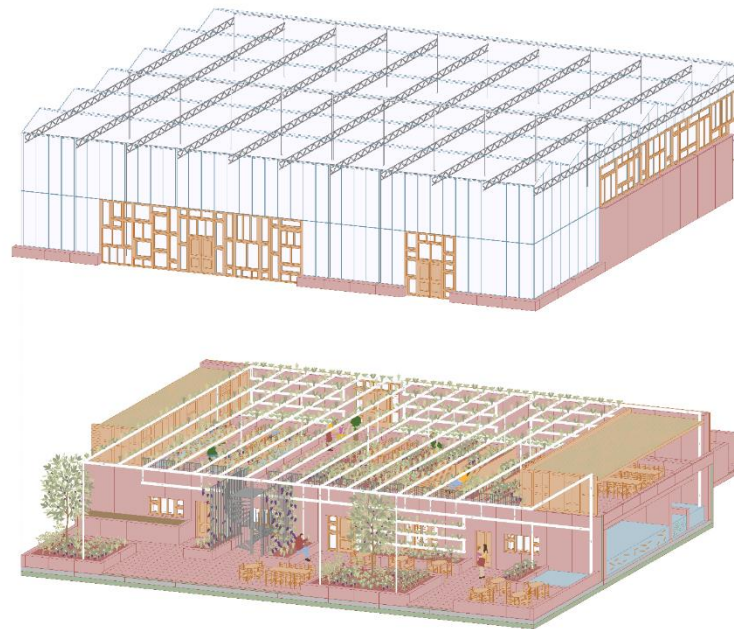


# Example: „soil-less“ NbS for polluted sites

## Dortmund: a community center with aquaponics and community garden

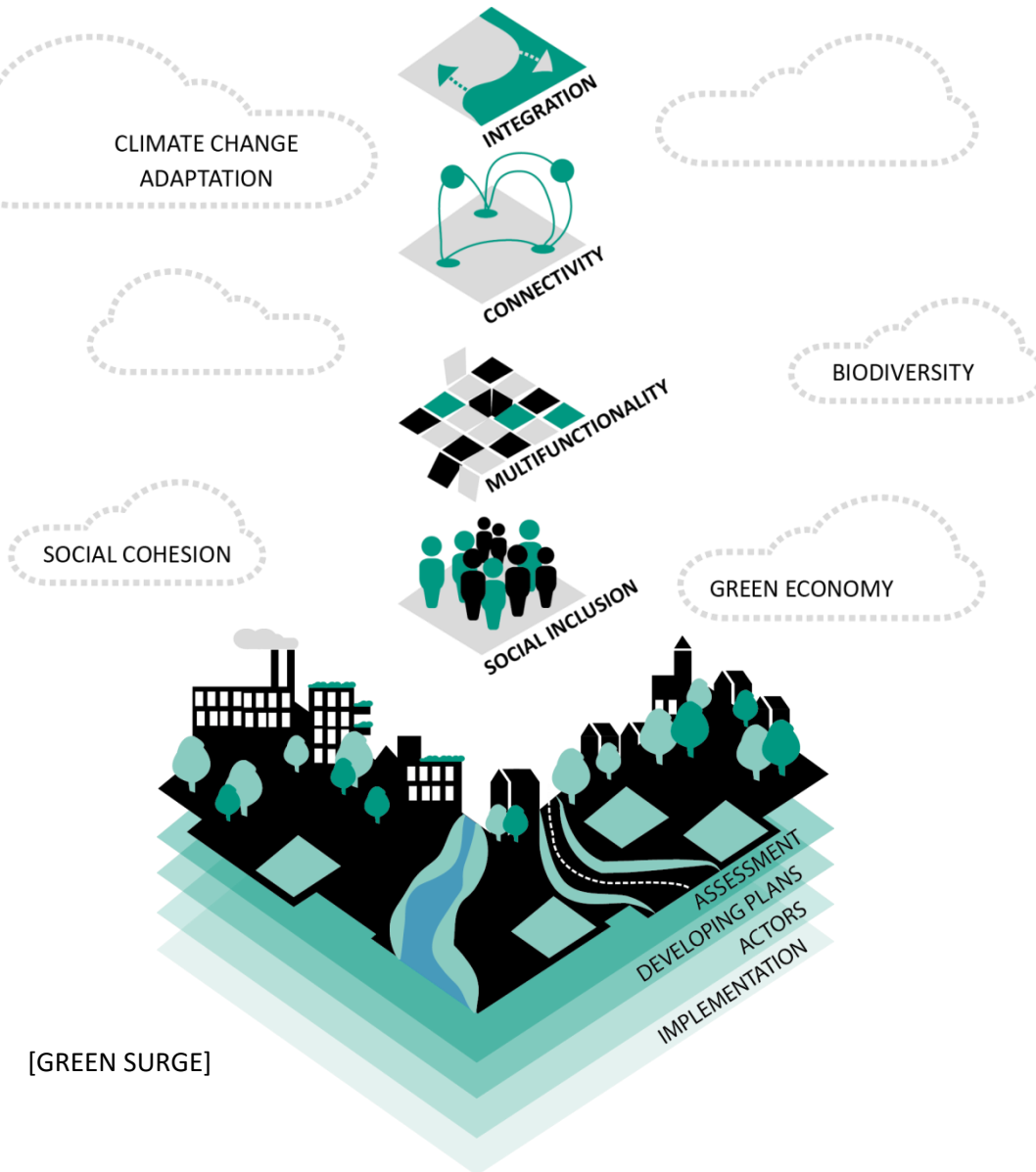


RWTH Aachen, Luisa Ropelato





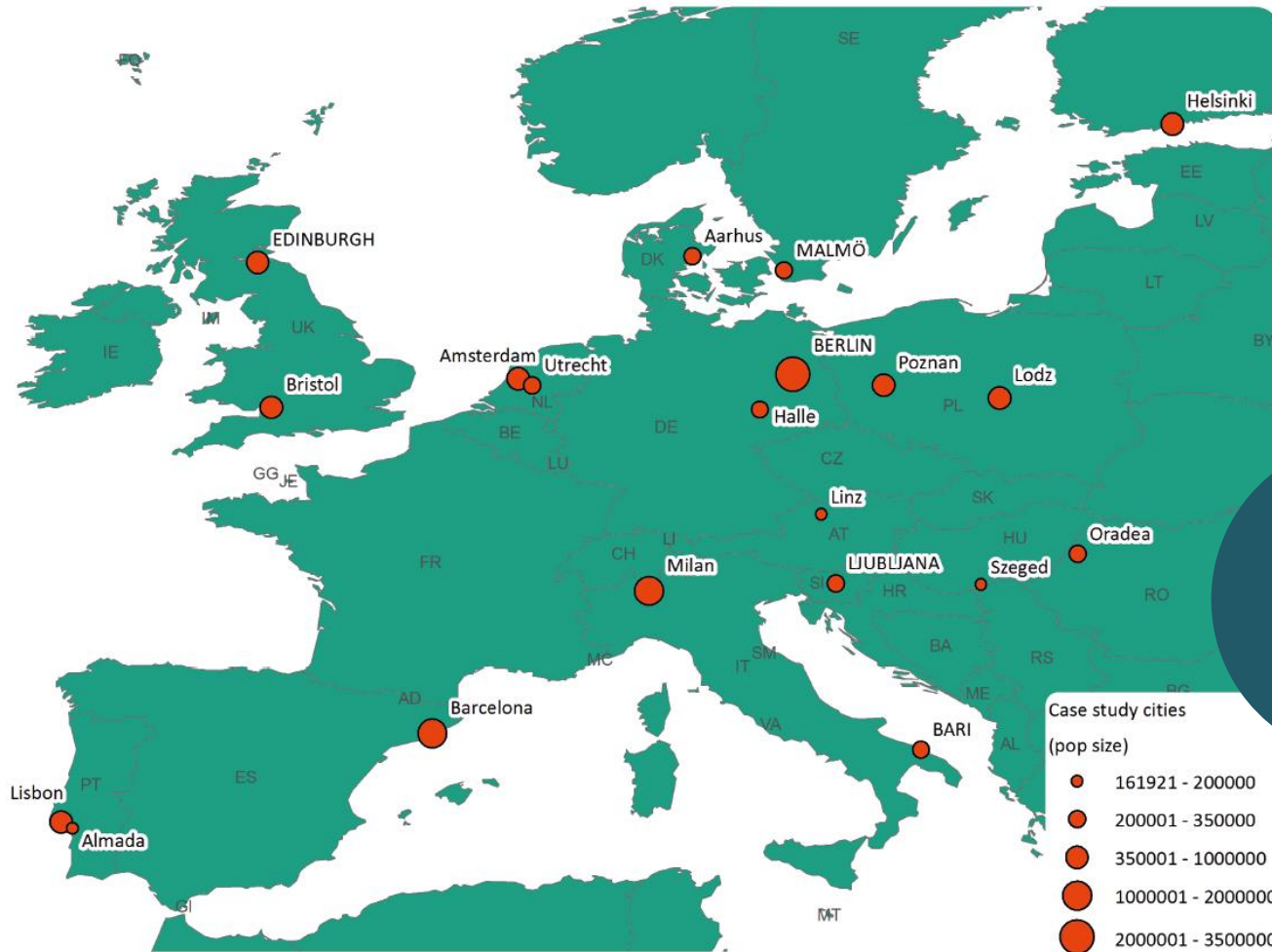
# Green infrastructure planning



[GREEN SURGE]



# Case studies



5 Urban Learning Labs

[GREEN SURGE]



# Berlin: opportunities and challenges for Green Infrastructure

Image removed

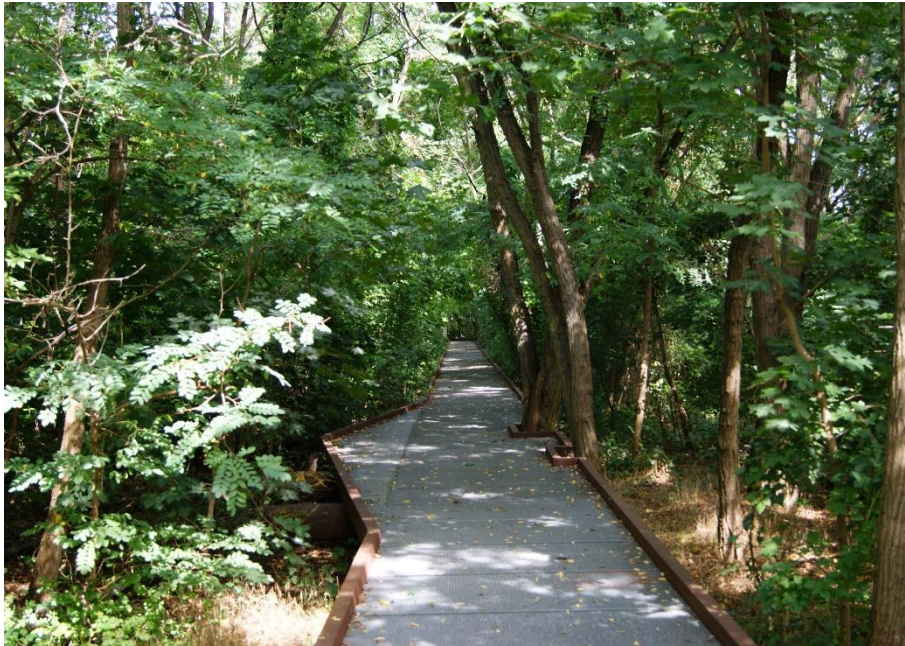


View from Berlin Teufelsberg Radar Station (R. Hansen)

Berlin Strategy (Senate Department for Urban Development and the Environment)



# Berlin: opportunities and challenges for Green Infrastructure



Schöneberger Südgelände (R. Hansen)



Tempelhofer Feld (R. Hansen)



# Berlin: opportunities and challenges for Green Infrastructure

Images removed

Berlin Strategy 2.0 (Senate Department for  
Urban Development and the Environment)



# Berlin: opportunities and challenges for Green Infrastructure

## New housing areas

Image removed

Gesamtstädtische Ausgleichskonzeption  
(Senatsverwaltung für Umwelt, Verkehr  
und Klimaschutz)



# Berlin's approach: Landscape Programme

## Thematic plans and synthesis plan

Images removed





# Berlin's approach: Landscape Programme

## Connected green space system

Image removed





# Berlin's approach: Nature compensation for GI

Developing green and grey together

Image removed





# Berlin's approach: Nature compensation for GI

Invest in focus areas for nature conservation and recreation

Images removed



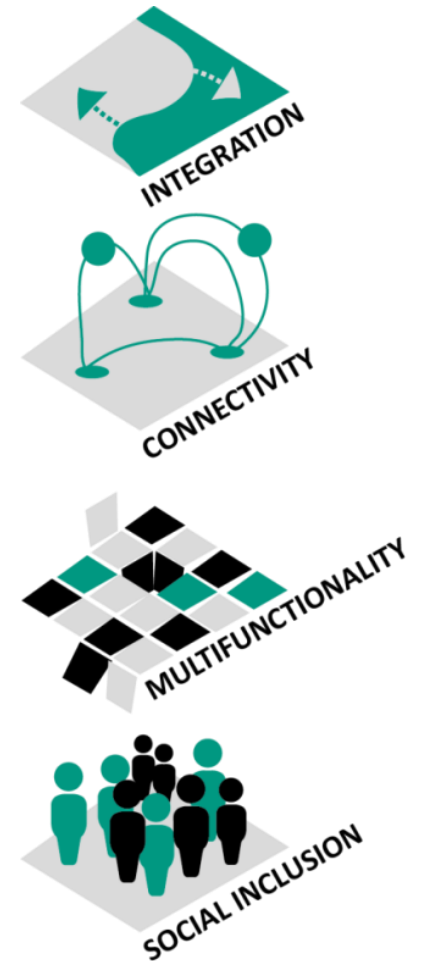


# Berlin's approach: Nature compensation for GI

Implement connected, multifunctional greenspaces for people and biodiversity



Altes Flugfeld Johannisthal (R. Hansen)





# Conclusion

Plan **Green Infrastructure** strategically across scales – from city-region to site.

Utilize **nature-based solutions** to target global and local challenges – while leveraging multiple co-benefits.

Enhance and maintain the multiple social, environmental and economic benefits of **green infrastructure** and **nature-based solutions**.

